

AN
ISO 9001:2015
CERTIFIED COMPANY



SK INDUSTRIES

INNOVATION FOR HARDWARE



CONTACT US



+91 81402 12779



www.skindustry.co.in

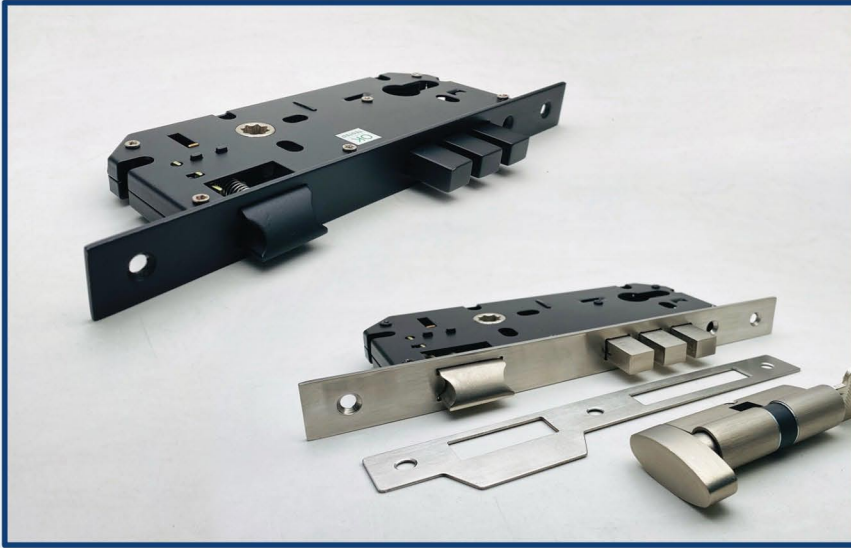


sales@skindustry.co.in



exports@skindustry.co.in

LOCK BODY



Lock Body

Model : SKL-001
Material : Brass, Zinc

Finish 45 X 85

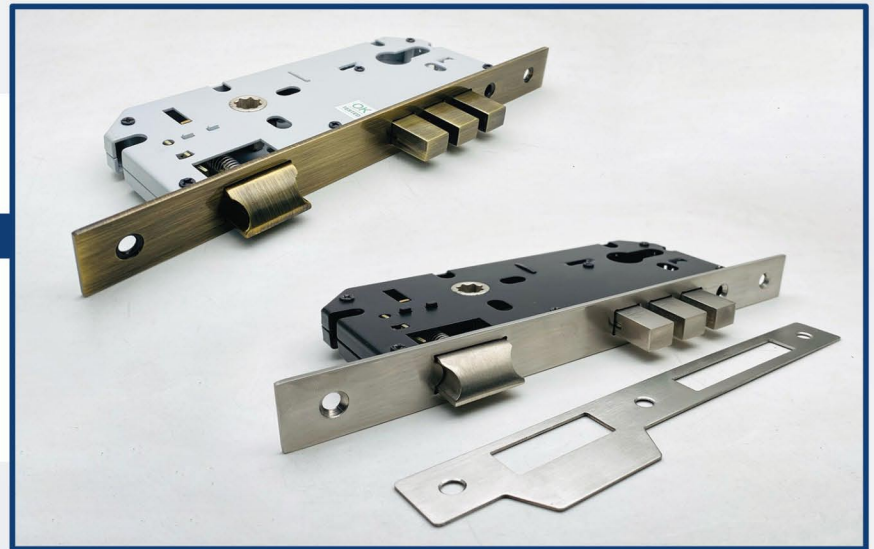
SS	Packing	1 Pc.
CP	Master Pack	25 Pc.
AB		
Black Matt		
Rose Gold		
Gold		

Lock Body

Model : SKL-002
Material : Brass, Zinc

Finish 50 X 85

SS	Packing	1 Pc.
CP	Master Pack	25 Pc.
AB		
Black Matt		
Rose Gold		
Gold		

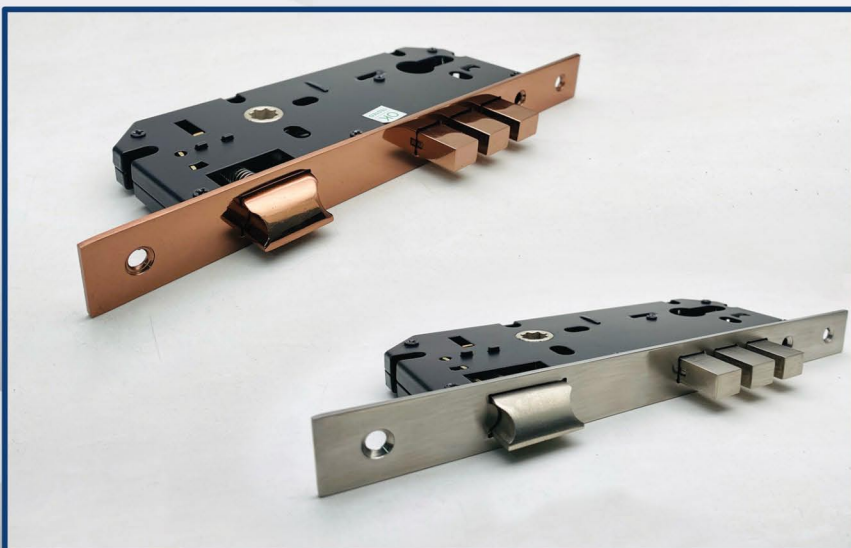


Lock Body

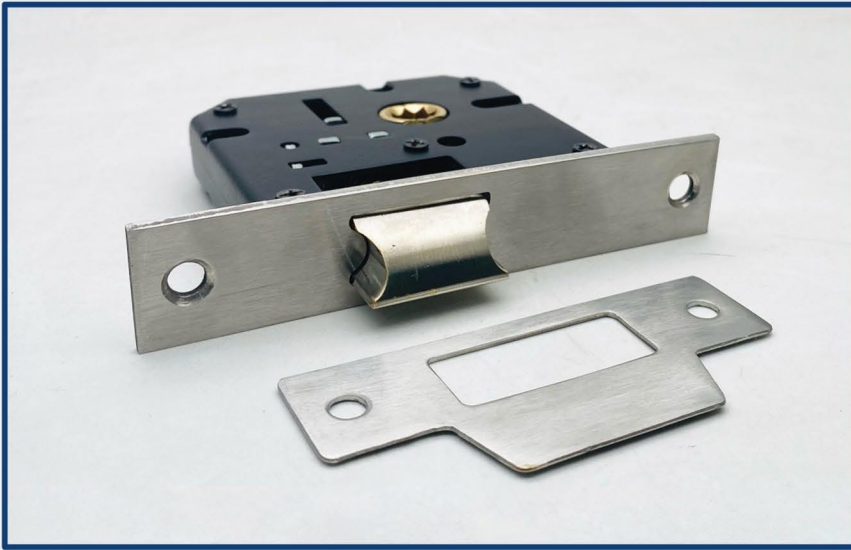
Model : SKL-003
Material : Brass, Zinc

Finish 60 X 85

SS	Packing	1 Pc.
CP	Master Pack	25 Pc.
AB		
Black Matt		
Rose Gold		
Gold		



LOCK BODY



Baby Latch

Model : SKL-004
Material : Brass, Zinc

Finish

SS
CP
AB
Black Matt
Rose Gold
Gold

Packing 1 Pc.
Master Pack 25 Pc.

Dead Lock

Model : SKL-005
Material : Brass, Zinc

Finish

SS
CP
AB
Black Matt
Rose Gold
Gold

Packing 1 Pc.
Master Pack 25 Pc.



Lock Body

Model : SKL-006
Material : Brass, Zinc

Finish

SS
CP
AB
Black Matt
Rose Gold
Gold

7" - 50 X 50

Packing 1 Pc.
Master Pack 25 Pc.



CYLINDER & FLANGES



Pin Cylinder 3 U KNK

Model : SKC-001
Material : Brass,
Zinc

Finish

SS
CP
AB
Black Matt
Rose Gold
Gold

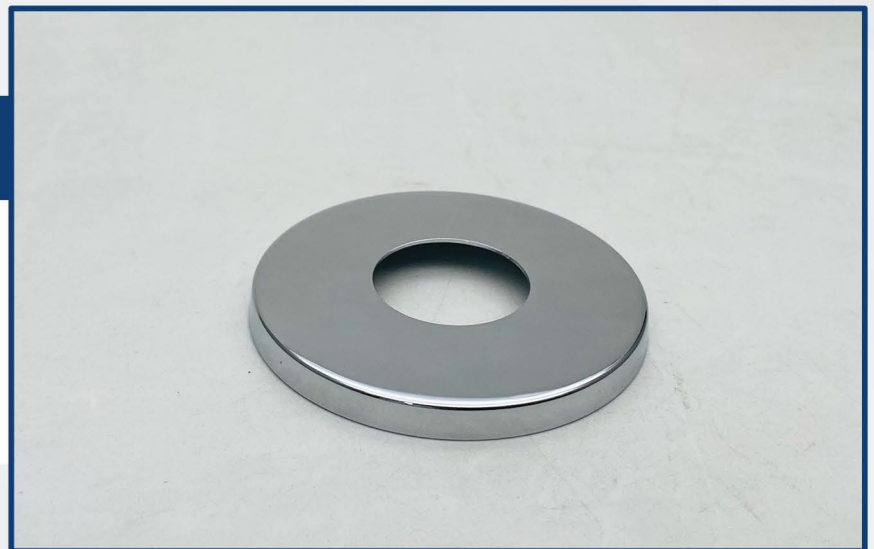
Size

60 mm
70 mm
80 mm
90 mm

Model : SKF-001

Material : 304/202, Brass

Finish : Chrome



Model : SKF-002

Material : 304/202, Brass

Finish : Chrome



FLANGES



Model : SKF-003

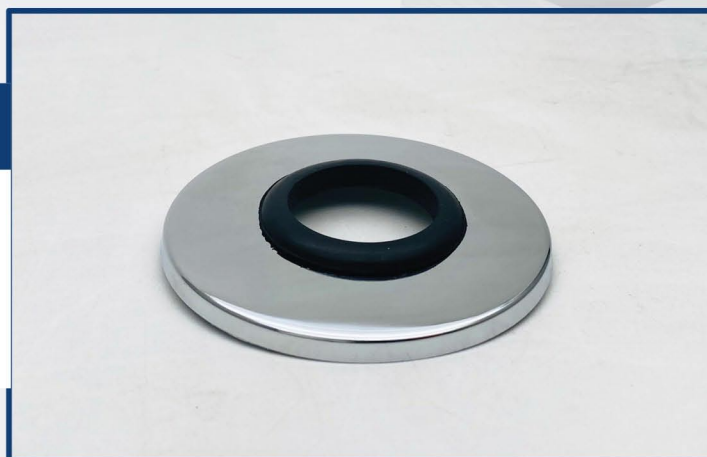
Material : 304/202, Brass

Finish : Chrome

Model : SKF-004

Material : 304/202, Brass

Finish : Chrome



Model : SKF-005

Material : 304/202, Brass

Rate : 14.50/12.50

Finish : Chrome

Weight : 14.3 g



Model : SKF-006

Material : 304/202, Brass

Rate : 18.50/16.50

Finish : Chrome

Weight : 19.5 g





SK INDUSTRIES

INNOVATION FOR HARDWARE

Manufactured & Marketed By

S.K. INDUSTRIES

Survey No. 191, Plot No.- 22/A, Bhagyalaxmi Industries Estate,
Near Shanti Food, Bhavnagar Road,
Rajkot-360003 (Gujarat) India.

 www.skindustry.co.in